

# S2 Deletion Variants of Human PRL Receptors Demonstrate That Extracellular Domain Conformation Can Alter Conformation of the Intracellular Signaling Domain<sup>†</sup>

Dunyong Tan, Kuang Tzu Huang, Eric Ueda, and Ameae M. Walker\*

Division of Biomedical Sciences, University of California, Riverside, California 92521

Received July 14, 2007; Revised Manuscript Received October 14, 2007

**ABSTRACT:** Using spacers between the C-termini of the long (LF) or short (SF) human prolactin receptors and luciferase/GFP such that bioluminescence resonance energy transfer (BRET) occurred minimally in intact versions of these receptors in the absence of ligand, we have monitored the BRET signal after deletion of regions of the extracellular domain (ECD). Deletion of S2 produced ligand-independent BRET for only those pairings normally occurring in the presence of ligand with the intact receptor. Deletion of the similarly sized S1, or S1 plus S2, produced no ligand-independent or -dependent BRET. When deleted receptors were transfected into human breast (T47D) or prostate (DU145) cancer cells incubated in the absence of added prolactin (PRL) and presence of anti-PRL, expression of the  $\Delta$ S2LF resulted in increased cell number, whereas expression of the intact receptor did not. When endogenous  $\beta$ -casein expression was examined in T47D cells, the  $\Delta$ S2LF and  $\Delta$ S2F1a both showed ligand-independent activation of transcription, again not duplicated by the intact receptor. Paired with evidence in the literature for predimerization of PRLRs, these results demonstrate that altered ECD conformation, and not just a change in bulk, produces altered conformation of the intracellular signaling region of the receptors, supporting the concept that ligand binding to the ECD of intact predimerized receptors could initiate signaling. In addition, the current work supports a dual proliferative and differentiative role for the LF receptor, but only a differentiative role for the SF1a receptor. Naturally occurring  $\Delta$ S2 PRL receptors (PRLR) were also found in normal and cancerous human cells. This additionally suggests a heretofore unappreciated ligand-independent role for PRLRs.

Prolactin (PRL)<sup>1</sup> is a pituitary polypeptide hormone characterized by multiple biological actions including growth control in the prostate and stimulation of development and milk protein gene expression in the mammary gland (1–3). The effects of PRL are mediated by interaction with specific receptors located on the plasma membrane of many target tissues (4, 5). PRL receptors (PRLR) belong to the superfamily of hematopoietic cytokine receptors, which are devoid of intrinsic catalytic activity (6). Rather, family members associate with tyrosine kinases that are activated upon binding of the ligand, which in the case of the PRLR, results

in one ligand–two receptor ternary complexes (7). Activation requires close proximity of the intracellular domains (7) and can be measured by bioluminescence resonance energy transfer (BRET), as described previously (8, 9). Receptors in this family have an extracellular ligand-binding domain, a single hydrophobic transmembrane domain, and an intracellular domain (10). The extracellular domain (ECD) of the PRLR (and other members of this cytokine receptor family) consists of two subdomains of approximately 100 amino acids each, S1 and S2, both of which are involved in ligand binding (10, 11). Increasing evidence shows that the two subdomains of the ECD function in very different ways. Gourdou and co-workers (12) examined the properties of mutant forms of the rabbit long form PRLR, in which the S1 or S2 subdomains were deleted, and found deletion of S2 made the receptor constitutively active when using milk protein gene expression as the measure of bioactivity. Lee et al. (13) also showed that deletion of most of the ECD (but not specifically the S2 region) of the human long PRLR led to constitutive activation and ligand-independent proliferation of cells. These investigators produced such mutant forms to analyze regions of the ECD involved in ligand binding and the process of receptor dimerization.

More recent work on the PRLR, however, has shown that the receptors are predimerized (14–16), a conclusion previously drawn for several other members of this receptor

<sup>†</sup> This work was supported by California Breast Cancer Research Program Grant 10PB-0127, NIH Grant DK61005, and by a grant from the Prostate Cancer Foundation. K.T.H. was a recipient of an individual predoctoral fellowship from the Department of Defense Breast Cancer Research Program - BC051103.

\* Corresponding author. Telephone: 951-827-5942. Fax: 951-827-5504. E-mail: ameae.walker@ucr.edu.

<sup>1</sup> Abbreviations: PRL, prolactin; PRLR, prolactin receptor; LF, long form; SF, short form; GFP, green fluorescent protein; BRET, bioluminescence resonance energy transfer; ECD, extracellular domain; Rluc, *Renilla* luciferase; Gluc, *Gussia* luciferase; MTS, 3-(4,5-dimethylthiazol-2-yl)-5-(3-carboxymethoxyphenyl)-2-(4-sulfophenyl)-2H-tetrazolium, inner salt; PMS, phenazine methosulfate;  $\Delta$ S1, receptor missing the S1 region of the extracellular domain;  $\Delta$ S2, receptor missing the S2 region of the extracellular domain;  $\Delta$ S1S2, receptor missing both the S1 and S2 regions of the extracellular domain; DPBS, Dulbecco's phosphate-buffered saline; DMEM, Dulbecco's modified Eagle's medium.

superfamily (17, 18). It is thus suggested that the binding of ligand initiates signal transduction by causing a change in the conformation of the preformed receptor pair. In the current study, we have used the generation of a BRET signal to examine whether a change in conformation of the ECD could in fact result in a change in conformation of the intracellular, signaling region. Binding of PRL to the PRLRs involves parts of both the S1 and S2 regions of the ECD (7, 10, 11, 19). We therefore deleted either the S1 or similarly sized S2 region of the ECD (or both). In addition, we used the LF and both SFs (SF1a and SF1b) of the human PRLR to take advantage of our previous determination that while all homo- and most heteropairs of these receptors form a signaling complex with PRL (8), SF1a and SF1b heteropairs do not.

The current study demonstrates that removal of the S2 extracellular subdomain changes the conformation of the intracellular signaling region of the LF and both SF receptors, thereby supporting the concept that the conformation of the ECD can affect the conformation of the intracellular domain of these single transmembrane receptors, and hence that ligand binding could initiate signaling by this means in predimerized receptors. In addition, the current work supports a dual proliferative and differentiative role for the LF receptor, but only a differentiative role for the SF1a receptor. Moreover, the finding that the  $\Delta$ S2 versions are produced naturally in human prostate and endothelial cells suggests a heretofore unappreciated ligand-independent role for  $\Delta$ S2 PRLRs in these tissues.

## EXPERIMENTAL PROCEDURES

**Materials.** The codon-humanized pGFP<sup>2</sup>-N1 (h) and pRluc-N1 (h) vectors, containing multiple cloning sites upstream of the GFP<sup>2</sup> gene or Rluc gene, and the luciferase substrate, DeepBlueC, were purchased from Perkin-Elmer (Wellesley, MA). Coelenterazine *h*, another substrate for Rluc used for the spectral studies and receptor binding assays, was purchased from Assay Designs, Inc. (Ann Arbor, MI). The PRLR cDNAs, encoding the LF, SF1a and SF1b, were originally kindly provided by Dr B. K. Vonderhaar (NCI, Bethesda, MD) and were cloned into the GFP and Rluc vectors as described previously (8). The cell proliferation assay reagents, 3-(4,5-dimethylthiazol-2-yl)-5-(3-carboxymethoxyphenyl)-2-(4-sulfophenyl)-2H-tetrazolium inner salt (MTS) and phenazine methosulfate (PMS), were products of Promega (Madison, WI). Reverse transcriptase and pfu polymerase were purchased from Stratagene (La Jolla, CA). The transfection reagent, lipofectamine 2000, was from Invitrogen (Carlsbad, CA). Unmodified PRL was purified from *Escherichia coli* (BL21) as described previously (20).

**Generation of Eukaryotic Expression Vectors for PRLR Mutants Tagged with GFP<sup>2</sup> or Rluc.** The cDNA for the human PRLR in a mammalian expression vector has been described previously (8). Mutants were established by PCR splicing. As shown in Figure 1, to create  $\Delta$ S1 or  $\Delta$ S2 forms of the PRLRs, 101 amino acids (303 bp nucleotide) were deleted (amino acid 3–103 in S1 or 106–206 in S2). Furthermore, to create  $\Delta$ S1S2, 204 amino acids (3–206) were deleted. Four primers (Table 1) were required for each construct, two flanking primers (primers 2 and 3) and two hybrid primers (primers 1 and 4). The two flanking primers

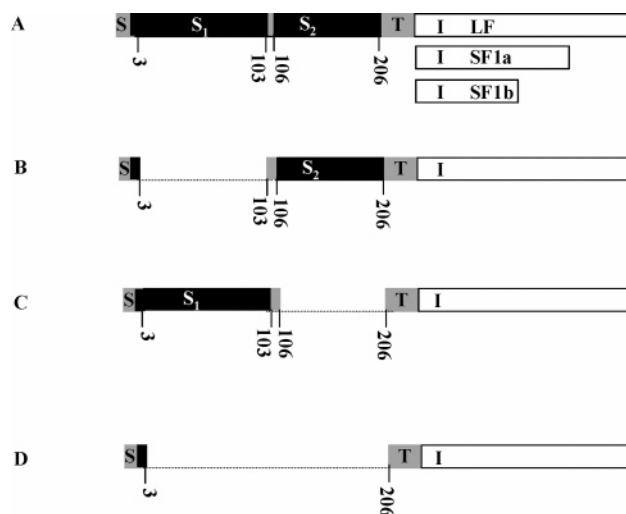


FIGURE 1: Diagram illustrating the different versions of the PRLR used. (A) Intact human LF PRLR with the shorter intracellular regions of SF1a and SF1b illustrated. The transmembrane and ECD regions are the same for all three. (B) S1-deleted. (C) S2-deleted. (D) S1- and S2-deleted. The dotted line illustrates the part deleted, and the numbers given are the amino acids in the mature sequence. S, signal peptide; S1, subdomain 1; S2, subdomain 2, of the extracellular domain; T, transmembrane; I, intracellular part of LF, SF1a and SF1b.

were based on the sequence immediately before and after the part to be deleted, and primers 2 and 3 were complementary to each other. In this study, 15 bases were designed on each side of the sequence to be deleted and combined with a 30 base primer in the next PCR reaction to generate fragments with deletion of the S1, S2 sequence, or both.

Additionally, to generate these deleted PRLRs tagged with Rluc or GFP<sup>2</sup> at the carboxy terminus, forming  $\Delta$ S1 PRLR-GFP<sup>2</sup>,  $\Delta$ S2 PRLR-GFP<sup>2</sup>,  $\Delta$ S1S2 PRLR-GFP<sup>2</sup>, and  $\Delta$ S1 PRLR-Rluc,  $\Delta$ S2 PRLR-Rluc,  $\Delta$ S1S2 PRLR-Rluc, the extra DNA base pairs corresponding to Mlu I (ACGCGT) and Kpn I (GGTACC) were designed to be upstream of the initiation codon on the forward primer 1 and to replace the stop codon on the reverse primer 4 (the nucleotide in bold in Table 1). An extra triplet ACC was also designed to be immediately prior to the initiator codon, ATG, to facilitate and therefore increase the translation rate in transfected mammalian cells. The high fidelity proofreading DNA polymerase (pfu polymerase) from Stratagene was used. The original plasmids, pEF6-LF, pEF4-SF1a, and pCR2.1-SF1b, which contain the entire coding sequence for LF (1866 bp), SF1a (1128 bp), and SF1b (864 bp), respectively, were used as template in the first stage PCR.

**Cell Culture and Transfection.** Human embryonic kidney 293 (HEK293) cells were maintained in Dulbecco's modified Eagle's medium (DMEM) (Invitrogen, Carlsbad, CA) containing high glucose, 1 mM sodium pyruvate and pyridoxine hydrochloride, 2 mM L-glutamine, supplemented with 10% fetal bovine serum, 100 units/mL of penicillin, and 0.7  $\mu$ M streptomycin. The cells were seeded at a density of  $5 \times 10^5$  cells per well of a six-well (or as indicated) plate. Transient transfections were performed the following day when the cells were 90–95% confluent using Lipofectamine 2000 (Invitrogen) in accordance with the protocol provided by the vendor. Briefly, 3.5–4.5  $\mu$ g of DNA was used per well (depending on the experiment). The DNA was initially incubated in 250  $\mu$ L of Opti-MEMI (Invitrogen) (without

Table 1: Flanking (2,3) and Hybrid (1,4) Primers Used in PCR Splicing<sup>a</sup>

| construct  | flanking primers  | hybrid primers  |
|------------|---|---|
| ΔS1-LF     | 2 5'-ctccaaaggagggtctactgtccattcag-3'<br>3 5'-ctgaatggacagtttagaccctcttggag-3'  | 1 5'-gac <b>acgcgt</b> accatgaaggaaatgtg-3'<br>4 5'-aac <b>gggtacc</b> agtgaaggagtgtg-3'    |
| ΔS1-SF1a   | 2 5'-ctccaaaggagggtctactgtccattcag-3'<br>3 5'-ctgaatggacagtttagaccctcttggag-3'  | 1 5'-gac <b>acgcgt</b> accatgaaggaaatgtg-3'<br>4 5'-aac <b>gggtacc</b> agtgaaggagtgtgcaa-3' |
| ΔS1-SF1b   | 2 5'-ctccaaaggagggtctactgtccattcag-3'<br>3 5'-ctgaatggacagtttagaccctcttggag-3'  | 1 5'-gac <b>acgcgt</b> accatgaaggaaatgtg-3'<br>4 5'-aac <b>gggtacc</b> agggggtcacctcaa-3'   |
| ΔS2-LF     | 2 5'-tgtatcattcatggttaggtctgctgaac-3'<br>3 5'-gttcagccagaccctaccatgaatgataca-3' | 1 5'-gac <b>acgcgt</b> accatgaaggaaatgtg-3'<br>4 5'-aac <b>gggtacc</b> agtgaaggagtgtg-3'    |
| ΔS2-SF1a   | 2 5'-tgtatcattcatggttaggtctgctgaac-3'<br>3 5'-gttcagccagaccctaccatgaatgataca-3' | 1 5'-gac <b>acgcgt</b> accatgaaggaaatgtg-3'<br>4 5'-aac <b>gggtacc</b> agtgaaggagtgtgcaa-3' |
| ΔS2-SF1b   | 2 5'-tgtatcattcatggttaggtctgctgaac-3'<br>3 5'-gttcagccagaccctaccatgaatgataca-3' | 1 5'-gac <b>acgcgt</b> accatgaaggaaatgtg-3'<br>4 5'-aac <b>gggtacc</b> agggggtcacctcaa-3'   |
| ΔS1S2-LF   | 2 5'-tgtatcattcatggttaggtctgctgaac-3'<br>3 5'-ctgaatggacagtttagaccctcttggag-3'  | 1 5'-gac <b>acgcgt</b> accatgaaggaaatgtg-3'<br>4 5'-aac <b>gggtacc</b> agtgaaggagtgtg-3'    |
| ΔS1S2-SF1a | 2 5'-tgtatcattcatggttaggtctgctgaac-3'<br>3 5'-ctgaatggacagtttagaccctcttggag-3'  | 1 5'-gac <b>acgcgt</b> accatgaaggaaatgtg-3'<br>4 5'-aac <b>gggtacc</b> agtgaaggagtgtg-3'    |
| ΔS1S2-SF1b | 2 5'-tgtatcattcatggttaggtctgctgaac-3'<br>3 5'-ctgaatggacagtttagaccctcttggag-3'  | 1 5'-gac <b>acgcgt</b> accatgaaggaaatgtg-3'<br>4 5'-aac <b>gggtacc</b> agggggtcacctcaa-3'   |

<sup>a</sup> Note: The nucleotides in bold are restriction sites designed to ligate into eukaryotic expression vector GFP<sup>2</sup>N1 or Rluc N1.

serum and antibiotics) and mixed gently. A 1:25 dilution of Lipofectamine 2000 in 250  $\mu$ L of the same medium was then prepared. After a 5-min incubation at room temperature, the diluted DNA and Lipofectamine 2000 solutions were mixed and incubated at room temperature for 20 min to allow the DNA–Lipofectamine2000 complexes to form. The complexes were then added to the cells (in medium with serum but without antibiotics) and mixed by rocking the plate back and forth. After a 48-h incubation of the cells at 37 °C in a CO<sub>2</sub> incubator, the cells were subjected to BRET analysis as described previously (8).

**Confocal Imaging.** Confocal microscopy (using a Zeiss 510) was applied to check cellular expression and localization of GFP<sup>2</sup>-tagged PRLRs. HEK293 cells were plated at a density of  $5 \times 10^5$  cells/35-mm well on polylysine-coated coverslips ( $\Phi = 12$  mm) and cultured in DMEM as described earlier. One day following plating, when the cells reached about 90% confluency, the cells were transfected with 0.8  $\mu$ g of DNA/35-mm well using lipofectamine 2000 as described earlier. Forty-eight hours after transfection, microscopic observation was performed.

**Living Cell-Based Binding and Uptake Study.** To investigate the binding/uptake properties of the deleted receptors in living cells, we developed a luminescence-based method. Briefly, the cDNA coding sequences of PRL and *Gaussia* luciferase (Nanolight technologies, Pinetop, AZ), a luciferase of 17 kDa, were amplified and fused from the original plasmid PT7-SCII-prl and pcDNA-3.1Gluc based on a PCR approach. A spacer coding for a 14 amino acid linker in the fusion protein was also included. The sequence of the spacer was GSRYRGPGLPVAT. The whole fusion fragment cDNA (prl-Gluc) was then subcloned into a mammalian expression vector, pcDNA3.1, which additionally codes for the signal sequence. Finally, transfection of pcDNA3.1-prl-(Gluc) into 293 cells was carried out, and conditioned medium (using horse serum so that the conditioned medium could be assayed in the Nb2 bioassay) containing PRL-Gluc was collected. The PRL bioactivity of the fusion protein was determined by Nb2 assay, as previously described (20, 21). A dilution of conditioned medium equivalent to 50 ng/mL of unmodified PRL in the same bioassay was chosen to compare binding and uptake abilities at physiological

concentration. To assess binding/uptake, cells were incubated in conditioned medium (diluted with fresh culture medium containing serum to achieve the correct concentration) for 3 h in the absence and presence of a 50-fold excess of unmodified PRL. Binding/uptake in the presence of excess PRL were considered nonspecific. A separate, nonspecific binding/uptake control was run for each receptor type. The cells were then washed three times with PBS before incubation in BRET<sup>2</sup> buffer (Dulbecco's PBS containing 0.9 mM CaCl<sub>2</sub>, 0.5 mM MgCl<sub>2</sub>·6H<sub>2</sub>O, and 5.5 mM D-glucose) for 5 min and measurement of luminescence intensity.

**RNA Isolation, RTPCR, and Western Blot.** Forty-eight hours after transfection with intact or deleted PRLR, the T47D cells were washed three times with Dulbecco's PBS, and RNA extractions were performed using TRIzol reagent (Invitrogen) according to the protocol suggested by the vendor. Total RNA was used for first-strand synthesis of cDNA using reverse transcriptase (Stratagene, La Jolla, CA). Briefly, 5  $\mu$ g of total RNA and 3  $\mu$ L of random primer (Epicentre, Madison, WI) in nuclease-free water were incubated at 65 °C for 5 min and slowly cooled to room temperature to allow the primers to anneal to RNA. Then, 5  $\mu$ L of  $5 \times$  RT buffer, 1  $\mu$ L of RNase inhibitor, 2  $\mu$ L of 100 mM dNTP mix, and 1  $\mu$ L of reverse transcriptase (Stratagene) were added and mixed and incubated at 42 °C for 1 h. For PCR, 1  $\mu$ L of RT product was added to a 50- $\mu$ L reaction containing 5  $\mu$ L of  $10 \times$  pfu polymerase buffer, 4  $\mu$ L of dNTP (4 mM), 2.5  $\mu$ L of forward or reverse primer (10 mM), and 1  $\mu$ L of pfu polymerase.  $\beta$ -Casein mRNA was detected using the following two primers: 5'-acactgtctacataaggc-3' (forward) and 5'-tgctgtagtcacagggtaga-3' (reverse), which yield a 303 bp fragment of the  $\beta$ -casein open reading frame. PCR parameters were as follows: 95 °C for 1 min, 55 °C for 50 s, 72 °C for 2 min, with a final extension period of 72 °C for 10 min.  $\beta$ -Casein mRNA is normally expressed at very low levels in these cells. Cycle titration ensured amplification in the linear range and a semiquantitative result. All data were normalized to  $\beta$ -actin.

When detecting the presence of the ΔS2 receptor in prostate cancer and endothelial cells, PCR primers with the following sequences were utilized: 5'-atcatgatggctaatgccacta-3' (forward) and 5'-tccaacagatgagcatcaaatc-3' (reverse).



Amplifications were carried out for 35 cycles of 95 °C for 30 s, 62 °C for 30 s, and 72 °C for 45 s. A final extension at 72 °C was performed after the last cycle for 5 min. For detection of the different isoforms of  $\Delta$ S2 PRLR, the same forward primer was used, but isoform-specific reverse primers were utilized: 5'-tggggttcctcacacttttc-3' (LF), 5'-gtaatgagaggcaccacacat-3' (SF1a), and 5'-aggggtcacctccacagat-3' (SF1b). Cycle number differed (see Figure 1 caption). The final PCR product was resolved in a 1% agarose gel, stained with ethidium bromide, and visualized under UV light. All bands obtained were sequenced to confirm their identity.

For Western blot, whole cell lysates were collected and 500  $\mu$ g of protein were precleared with 1  $\mu$ g of normal mouse IgG and 20  $\mu$ L of protein A/G agarose (Santa Cruz Biotechnology, Santa Cruz, CA). Precleared lysates were then incubated with 1  $\mu$ g of mouse anti-PRLR ECD antibody (Zymed, Carlsbad, CA) at 4 °C overnight. Immunocomplexes were captured with protein A/G agarose, and the beads were washed 3 times before dissolution of attached proteins in SDS loading buffer. SDS gel separation, transfer, membrane blocking, and incubation in anti-PRLR were as described previously (22), using an antibody dilution of 1:1000. Immunoprecipitation with normal mouse IgG served as the negative control.

**Cell Proliferation Assay (MTS Assay).** This assay was performed under stringent conditions previously described (21). Briefly, 42 mg of MTS reagent powder was dissolved in 21 mL of DPBS and filter-sterilized using a 0.2- $\mu$ m filter. To this was added 100  $\mu$ L of PMS/2 mL MTS solution under light-protected conditions. Twenty microliters of the freshly combined MTS/PMS solution was added to each well of a 96-well assay plate containing 100  $\mu$ L of cells in culture medium without serum. The cells plus reagents were then incubated at 37 °C, 5% CO<sub>2</sub> for 3 h, after which time the absorbance at 490 nm was recorded using a microplate spectrophotometer. The number of cells was in the linear range of the assay.

**Fluorescence and BRET<sup>2</sup> Measurements.** Transfected cells were harvested within 48 h of transfection by washing with DPBS (three times), detaching in DPBS containing 2 mM ethylenediaminetetraacetic acid (EDTA), pelleting by centrifugation, and resuspension in BRET<sup>2</sup> buffer (DPBS containing 0.9 mM CaCl<sub>2</sub>, 0.5 mM MgCl<sub>2</sub>·6H<sub>2</sub>O, and 5.5 mM D-glucose) at a density of  $2 \times 10^6$ /mL. After this and before the BRET<sup>2</sup> measurements, the cells were incubated at 37 °C for 1 h. For each measurement, 0.5 mL of the cell suspension was loaded into a 0.5-cm<sup>2</sup> quartz cuvette. Fluorescence and bioluminescence spectral scanning were performed using a FluoroMax-2 spectrofluorometer. Bioluminescence scanning and BRET<sup>2</sup> signal detection were carried out immediately after the addition of 5  $\mu$ M of the cell permeant luciferase substrate, DeepBlueC, with a black card in the path of the excitation light beam. Data were collected with the slits set at 5 nm, datum points were collected at 5-nm intervals, and signal integration was for 0.5 s per datum point. Energy transfer was defined as the BRET ratio ( $\text{Emission}_{500\text{nm}-520\text{nm}} - \text{background}_{500\text{nm}-520\text{nm}} / (\text{Emission}_{385\text{nm}-420\text{nm}} - \text{background}_{385\text{nm}-420\text{nm}})$ ). The signals obtained from nontransfected cells were considered background.

**Statistical Analysis.** All experiments were repeated a minimum of three times, and most were repeated five or six times. Numerical data are presented as the mean  $\pm$  SEM, and statistical significance was determined by ANOVA with post-tests using Bonferroni corrections for multiple comparisons against a single control, where appropriate.

## RESULTS

**Construction of Eukaryotic Expression Vectors for ECD-Mutated PRLRs Tagged with GFP<sup>2</sup> or Renilla Luciferase.** A set of ECD mutant receptors was constructed using a rapid splicing PCR approach. For each receptor, we produced three mutant forms: S1 deletion, S2 deletion, or a form with both S1 and S2 deleted, named  $\Delta$ S1,  $\Delta$ S2, or  $\Delta$ S1S2, respectively (Figure 1). Mutant sequences were confirmed by sequencing. To detect close approximation of the receptors, we used BRET and hence each mutant receptor was tagged with either *Renilla* luciferase (Rluc), which acts as an energy donor, or a variant of green fluorescence protein (GFP<sup>2</sup>), as an energy acceptor. The luciferase or GFP<sup>2</sup> was separated from the C termini of the receptors by 13 or 12 amino acid linkers, respectively. Insertion of these linkers has been previously shown to prevent most BRET in the intact receptors in the absence of ligand (8 and figure herein). Eighteen plasmids were constructed:  $\Delta$ S1LF-GFP<sup>2</sup>,  $\Delta$ S2LF-GFP<sup>2</sup>,  $\Delta$ S1S2LF-GFP<sup>2</sup>,  $\Delta$ S1SF1a-GFP<sup>2</sup>,  $\Delta$ S2SF1a-GFP<sup>2</sup>,  $\Delta$ S1S2SF1a-GFP<sup>2</sup>,  $\Delta$ S1SF1b-GFP<sup>2</sup>,  $\Delta$ S2SF1b-GFP<sup>2</sup>,  $\Delta$ S1S2SF1b-GFP<sup>2</sup>,  $\Delta$ S1LF-Rluc,  $\Delta$ S2LF-Rluc,  $\Delta$ S1S2LF-Rluc,  $\Delta$ S1SF1a-Rluc,  $\Delta$ S2SF1a-Rluc,  $\Delta$ S1S2SF1a-Rluc,  $\Delta$ S1SF1b-Rluc,  $\Delta$ S2SF1b-Rluc, and  $\Delta$ S1S2SF1b-Rluc. Energy transfer occurs when the Rluc and GFP<sup>2</sup> molecules come within  $\sim 100$  Å of one another and is initiated by the addition of the Rluc substrate, DeepBlueC, as described previously (8, 9).

To verify expression and comparable localization of the receptors, confocal fluorescence microscopy and spectrofluorimetry were performed on HEK293 cells 48 h post-transfection with the GFP<sup>2</sup> plasmids. As shown in Figure 2A, a proportion of each expressed transfected receptor translocated to the region of the plasma membrane after synthesis. Because the receptors are synthesized in the rough endoplasmic reticulum and travel through the Golgi on their way to the surface, regions of the cell consistent with these intracellular organelles were also highly fluorescent. Similar subcellular distributions were observed in human breast cancer T47D cells and prostate cancer DU145 cells (data not shown). Intracellular distribution was very similar to GFP<sup>2</sup> tagged versions of the intact receptors previously analyzed (8).

To verify normal fluorescence and bioluminescence spectral properties of the GFP<sup>2</sup> and Rluc, when attached to all versions of the receptors, measurements were performed using a spectrofluorometer, as described previously for the intact receptors (8, 9). All GFP<sup>2</sup>- and Rluc-tagged receptors had normal spectral properties. The spectra for the  $\Delta$ S1 forms are shown as an example (Figure 2B). On the basis of amount of fluorescence and luciferase activity, one can appreciate that transfection with equal amounts of cDNA results in different degrees of expression of each receptor, with SF1b being most efficiently expressed, followed by the LF and SF1a, the same as previously reported for the intact receptors,

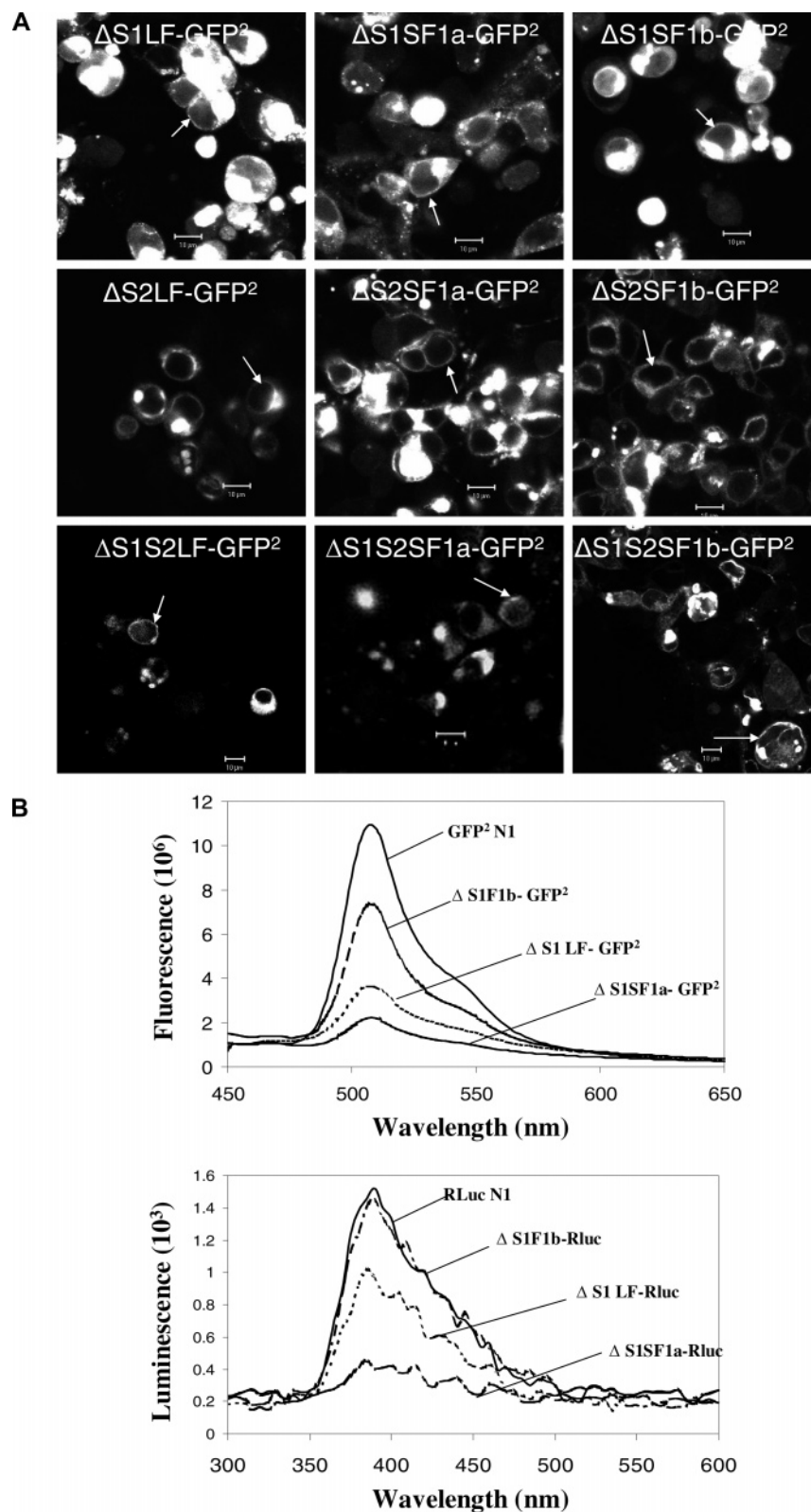


FIGURE 2: Confocal images demonstrating expression, localization (A), and spectral properties (B) of the GFP<sup>2</sup> and/or RLuc-tagged deleted human PRLRs. HEK293 cells transiently transfected with plasmids containing cDNA coding for the receptors tagged with GFP<sup>2</sup> were examined by confocal microscopy after 48 h. Bar, 10  $\mu$ m; white arrowhead, localization of the tagged receptors to the region of the plasma membrane. For spectral scanning, GFP<sup>2</sup> was excited at 405 nm. Bioluminescence generated by RLuc was detected in the presence of substrate, DeepBlueC (5  $\mu$ M), with blockade of the external excitation light source. Only the spectra for the  $\Delta$ S1 versions are shown by way of example, but all spectra were unaltered by attachment to the various receptors. GFP<sup>2</sup>N1 is the GFP<sup>2</sup> expressing vector without any receptor, and RLucN1 is the luciferase expressing vector without receptor. The relative expression of each receptor can be appreciated by comparing the amount of fluorescence or luciferase activity. Relative expression levels were the same for the intact and deleted versions of the receptor.

either untagged or similarly tagged (8). The different degrees of expression were not a function of transfection efficiency

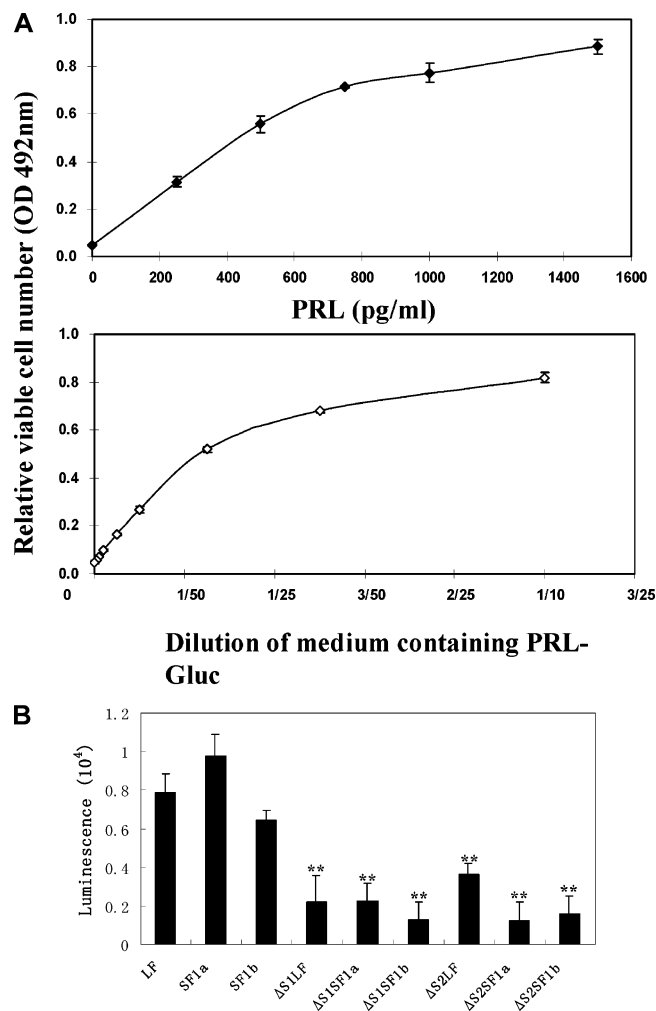
since transfection efficiency was indistinguishable among constructs on any given occasion (data not shown). Also,

all ECD versions of each receptor tested in the current experiments were expressed at the same level (i.e., intact,  $\Delta$ S1,  $\Delta$ S2, and  $\Delta$ S1S2), and each had the described same relative expression (i.e., SF1b > LF > SF1a). In other words, only the intracellular region of the receptor appeared to influence the level of protein expression.

**S1 or S2 Deletion Decreased Binding and Uptake of the Ligand.** To investigate the binding and uptake properties of the deleted receptors in living human cells (HEK293) under physiological conditions with homologous ligand, we developed a luminescence-based approach in which a low molecular weight luciferase was attached to the C-terminus of human PRL (see Experimental Procedures). This assay was conducted at 37 °C to ensure normal interaction of the ligand with the ECD and normal movement of the receptors in the lipid bilayer. The PRL-Gluc construct was expressed in human cells (HEK293), and conditioned medium (contained no FBS) was used as the source of ligand for binding. Biological activity of the Gluc-tagged human PRL was assessed by Nb2 PRL bioassay and compared to untagged human PRL, as shown in Figure 3A. The PRL-Gluc showed a concentration-related ability to stimulate Nb2 cell proliferation, which reached the same maximum as untagged PRL.

For binding/uptake studies, 50 ng/mL PRL activity equivalents of PRL-Gluc were incubated with the cells for 3 h at 37 °C, the cells were then washed with PBS three times, and the relative cell-associated luciferase activity was measured. Nonspecific binding/uptake (which was subtracted from the total and separately measured for each receptor construct) was assessed by binding/uptake in the presence of a 50-fold excess of unmodified PRL (2.5  $\mu$ g/mL). The results showed that deletion of the S1 or S2 subdomain markedly decreased binding/uptake for each of the receptors (Figure 3B). Although consistently higher, this level of binding/uptake was not statistically different from nonspecific. The 3-h incubation period was used to rigorously test for binding. Although this means that there was also uptake by the cells, the logic was that both binding and uptake are receptor-mediated processes and hence that the long incubation should amplify any specific binding.

**Prolactin-Independent BRET in Homo- and Heteropairs of  $\Delta$ S2 Receptors.** To assess approximation of the intracellular regions of the deleted receptor forms, BRET was measured. In this technology, when the energy donor and acceptor protein come within 100 Å of each other, energy transfer from donor to acceptor occurs. The amount of energy transfer is given as the BRET ratio, defined in Experimental Procedures. In the absence of PRL, there was a small background BRET ratio for the intact homopaired receptors (Figure 4A). This was unchanged by S1 deletion. S2 deletion on the other hand increased the BRET ratio to a level more than 3-fold background with the intact receptors. Deletion of both S1 and S2 resulted in no significant change from the intact receptors (Figure 4A). Only the  $\Delta$ S2 versions were therefore tested for the receptor heteropairs (Figure 4B). For  $\Delta$ S2LF- $\Delta$ S2SF1a, the BRET ratio was 4-fold that of the intact receptor. For  $\Delta$ S2LF- $\Delta$ S2 SF1b, the BRET ratio was double the intact receptor. Addition of PRL to  $\Delta$ S1,  $\Delta$ S2, and  $\Delta$ S1S2 homopairs did not change the BRET ratios of these deleted mutants (Figure 4C), thereby illustrating a lack of significant effect of any potential residual PRL binding in these receptors. Although described sequentially as



**FIGURE 3:** Biological activity of PRL-Gluc and the relative ability of the intact and deleted PRLRs on HEK293 cells to bind and internalize PRL-Gluc. Panel A compares diluted conditioned medium with unmodified human PRL. PRL-Gluc was biologically active, reaching the same maximum as unmodified PRL. OD 492 nm is absorbance in the MTS assay and is representative of relative cell number. A dilution of conditioned medium with bioactivity equivalent to 50 ng/mL unmodified PRL was used for the studies in panel B. After a 3-h incubation at 37 °C, the cells were washed three times and cell-associated luminescence was determined. Nonspecific binding/uptake (binding/uptake in the presence of excess unmodified PRL for each receptor type) was subtracted from each result. \*\*, significantly different from their intact counterpart with  $p < 0.01$ .

knowledge developed, the data presented in Figure 4A–C were obtained on the same occasion.

**Effect of the Deleted PRLRs on Breast and Prostate Cancer Cell Growth and Endogenous  $\beta$ -Casein Gene Transcription.** To assess the biological result of the deletions, receptors were transiently transfected into human breast (T47D) or prostate (DU145) cancer cells. Once again, transfection efficiency of each ECD form of the receptor was the same, but expression levels of the protein were different with the same relative expression levels as for the HEK293 cells. Forty-eight hours post-transfection, the cells were cultured for a further 24-h period in fresh medium in the continued absence of added PRL. Cell number was then assessed by MTS assay in serum-free medium (21), or RNA was extracted. As shown in Figure 5A,B, which shows relative viable cell number, only the  $\Delta$ S2LF had a significant

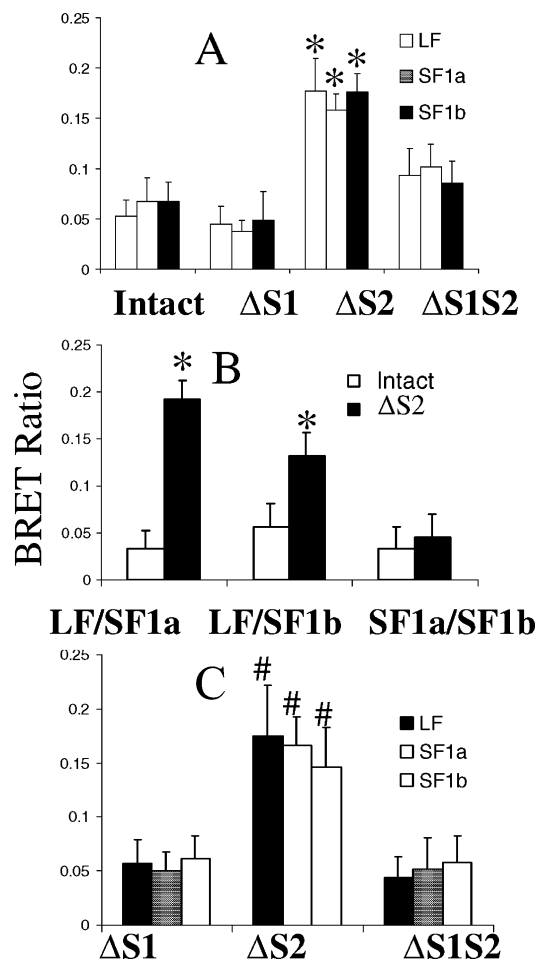


FIGURE 4: Bioluminescence resonance energy transfer with intact and variously deleted receptors and combinations of receptors in the absence (A and B) and presence (C) of PRL. HEK293 cells were transfected with equal quantities of GFP<sup>2-</sup> or luc-tagged receptors and 48 h later were subjected to BRET analysis initiated by the addition of substrate. For panel B, the same result was obtained regardless of which receptor in the pair was tagged with GFP or luc. Results in all three panels are the mean  $\pm$  SEM derived from experiments in which all variables from all panels were concurrently analyzed. Energy transfer is given as the BRET ratio (Emission<sub>500nm–520nm</sub> – background<sub>500nm–520nm</sub>)/(Emission<sub>385nm–420nm</sub> – background<sub>385nm–420nm</sub>). BRET signals obtained from nontransfected cells were considered background in this equation. \*, significantly different from the intact version with  $p < 0.05$ ; #, significantly different from  $\Delta S1$  and  $\Delta S1S2$  ( $p < 0.05$ ) and not different from  $\Delta S2$  in panel A.

effect, and this was to increase cell number in both human breast cancer cells (A) and human prostate cancer cells (B). The presented data are only normalized to the control transfected cells so that the degree of change can be appreciated and are not adjusted for transfection efficiency in the culture. Adjustment for transfection efficiency would approximately triple the response. Addition of an antibody to human PRL did not change this overall result (data not shown), although cell number in all incubations went down. The reduced cell number demonstrates that the antibody was effective at binding and neutralizing autocrine PRL. The antibody used was a chicken anti-human PRL raised in the laboratory and demonstrated at the same concentration (1  $\mu$ g/mL) to completely block human PRL-stimulated Nb2 cell proliferation during a 3-day incubation (data not shown). The cell proliferation result was therefore unlikely due to autocrine PRL and residual binding to the  $\Delta S2$ LF. To test the

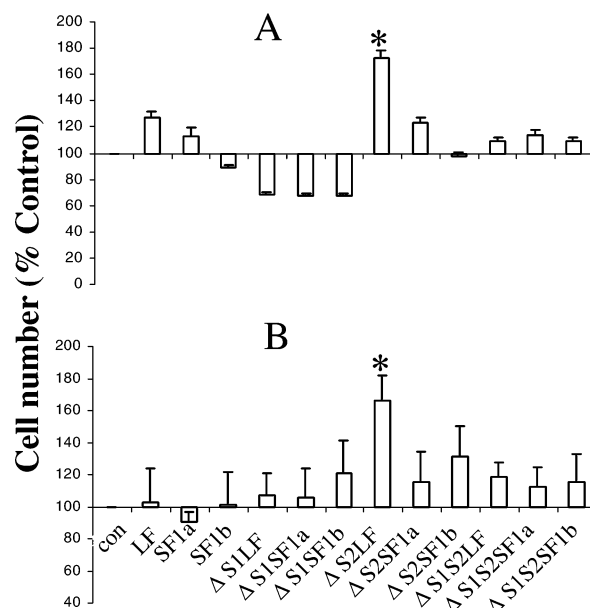


FIGURE 5: Effect of intact and deleted PRLRs on the growth of human breast cancer T47D cells (A) and human prostate cancer DU145 cells (B) in the absence of added PRL. Receptor constructs were transfected into either T47D or DU145 cells. Forty-eight hours post-transfection, the medium with serum was refreshed. After a further 24 h, the medium was changed to serum-free DMEM to conduct the MTS assay. Data are expressed as a percent of the control to illustrate the change induced. The data are not corrected for either transfection efficiency or expression efficiency for reasons discussed in the text. The same overall result was obtained when anti-PRL was added to the incubation, although cell number was decreased in each incubation indicative of an effect of the antibody on autocrine PRL. \*, significantly different from the intact counterpart with  $p < 0.05$ .

possibility that overcrowding of receptors (due to overexpression) could produce proliferation, intact versions of the receptors were also used. No significant effect on cell proliferation (versus controls similarly incubated) was observed with the intact receptors (which were expressed at very similar levels) in the absence of added ligand and presence of anti-PRL. This control also negates the possibility that autocrine PRL may have interacted with the  $\Delta S2$  receptors in an intracellular compartment not accessed by anti-PRL.

Also, in human breast cancer cells, but not in the DU145 cells, a consistent reduction, but not a statistically significant decrease, in relative cell number was observed with all three  $\Delta S1$  receptors ( $\Delta S1$ LF,  $\Delta S1$ SF1a, and  $\Delta S1$ SF1b).

When endogenous  $\beta$ -casein gene expression was analyzed, a significant increase in expression occurred in  $\Delta S2$ LF and  $\Delta S2$ SF1a transfected cells (Figure 6). Once again, although normalized to the control transfected cells, these data have not been normalized for transfection efficiency. This result was also not altered by the addition of anti-human PRL to the medium (data not shown). Since the  $\Delta S2$ SF1a generated a response that was indistinguishable from that of the  $\Delta S2$ LF in terms of  $\beta$ -casein gene expression, it seems unlikely that the lack of effect of the  $\Delta S2$ SF1a on cell proliferation was due to the lower level of expression of this form. Clearly, since the  $\Delta S2$ SF1b was expressed the most efficiently, the level of expression is not the cause for an absence of significant effect of this form.

*Expression of Naturally Occurring  $\Delta S2$  PRLRs in Human Cells.* Given the constitutive activity of the  $\Delta S2$



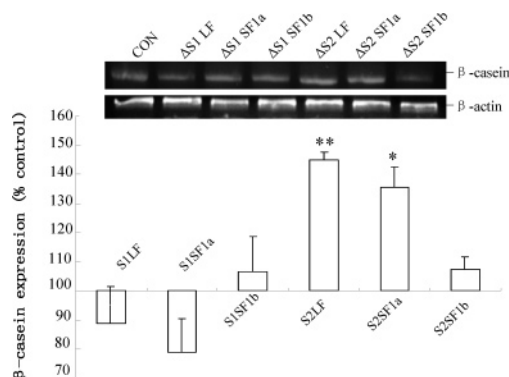


FIGURE 6: Effect of the  $\Delta S1$  and  $\Delta S2$  receptors on endogenous  $\beta$ -casein gene expression in T47D cells. Forty-eight hours post-transfection, the cells were subjected to a further 24-h incubation in the absence of added PRL and then RT-PCR for  $\beta$ -casein was performed. Data are expressed relative to expression in nontransfected cells (which was the same as that in cells expressing the doubly deleted S1S2 receptor) to illustrate the changes observed. The data are not corrected for either transfection or expression efficiency. The same overall result was obtained in the presence of anti-PRL. \*, significantly different from both the nontransfected and  $\Delta S1S2$ -transfected cells with  $p < 0.05$ .

PRLRs, we examined the possibility that some form of this variant occurred naturally in human cells. RT-PCR results showed that in addition to the intact receptors, an amplicon approximately 300 bp shorter than the intact receptor was detected in human prostate cancer cells, LNCaP, DU145, PC-3, and human microvascular endothelial cells, HmVEC-1 (Figure 7A). In DU145 cells, this amplicon was present in larger amounts than the intact receptor. DNA sequence analysis revealed a 303 bp deletion, which generated a transcript lacking the S2 region (amino acids 106–206) and which serendipitously exactly matched the one we had constructed. Next, we examined whether the LF, SF1a and SF1b, each have a  $\Delta S2$  variant. Isoform-specific reverse primers were utilized in RT-PCR analysis. Figure 7B shows PC-3 cells as an example and illustrates that all three  $\Delta S2$  PRLR isoforms, as well as the intact receptors, can be detected. Once again, sequencing verified the nature of the band. It should be noted when looking at these results that different numbers of cycles were used for each form (see Figure 7 caption). Previous analysis of DU145 and PC3 cells had not detected any intact SF1a (22), but a very small amount of intact and more  $\Delta S2SF1a$  was detected in the current study, perhaps due to the use of different primers (see Experimental Procedures). To ensure that the mRNA was translated into protein, Western blot analysis was performed. Figure 7C demonstrates an anti-PRLR positive band in LNCaP, PC3, and T47D cells that runs at the same mol wt (filled arrow) as  $\Delta S2SF1b$  in stably transfected T47D cells (TAS2). Because this methodology is not capable of distinguishing between  $\Delta S1$  and  $\Delta S2$ , the possibility that this could be a  $\Delta S1$  form was examined by performing RT-PCR with primers specific for such forms. No  $\Delta S1$  forms were detected in these cells, thereby supporting the idea that the positive band on the Western was indeed the  $\Delta S2SF1b$ . The band for a LF is also indicated by the open arrow since this serves as a positive control for the immunoprecipitation and Western. Although the antibody used for both immunoprecipitation and Western recognizes the remaining ECD with the  $\Delta S2$  versions, there is no means to quantify the

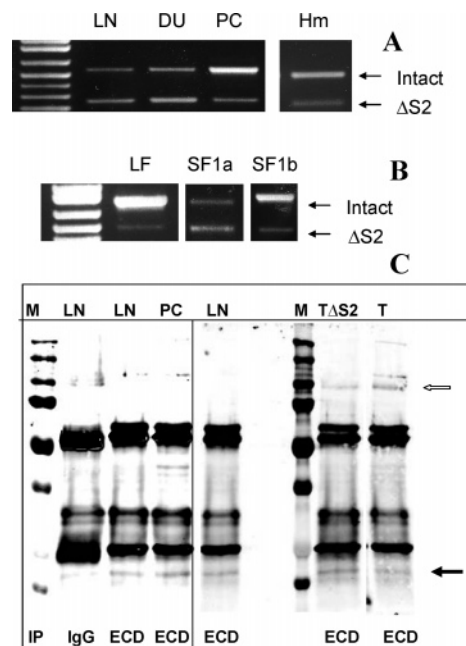


FIGURE 7: Natural expression of  $\Delta S2$  PRLRs. (A) Amplicons resulting from the expression of both intact and  $\Delta S2$  PRLR were observed in human LNCaP (LN), DU145 (DU), PC3 (PC), and microvessel human endothelial (Hm) cells, and their identities were confirmed by sequencing. (B) Use of form-specific reverse primers demonstrated the presence of a  $\Delta S2$  variant of each receptor in all cells, and PC3 cells are illustrated by way of example. Again, the identities of the amplicons were verified by sequencing. Note that different numbers of cycles were required to demonstrate this for each receptor isoform, and thus the panels cannot be compared in terms of relative abundance (LF and SF1a, 35 cycles; SF1b, 40 cycles). (C) After immunoprecipitation,  $\Delta S2$  versions of SF1b are illustrated (closed arrow) as detected by Western blot (using the same anti-ECD antibody) in PC3, LNCaP, and T47D (T) cells. Also illustrated is comigration of immunoprecipitated  $\Delta S2SF1b$  stably expressed under the control of tetracycline in T47D cells (TAS2). M, molecular mass markers; IP, immunoprecipitated with control isotype-matched antibody (IgG) or antibody against the ECD; open arrow marks a LF of the receptor. The vertical line separates samples run on different gels. The sample from normal T47D cells (T) was run on the same gel, but the lane was cut and pasted to be next to the TAS2 cells to eliminate distracting additional experiments.

relative affinity of this antibody versus the intact ECD and so one cannot draw conclusions as to the relative amounts of each form of the receptor expressed at the protein level. Making the assumption that the mRNA is translated in proportion to its presence, however, it appears that the  $\Delta S2$  versions could play a significant role in PRLR function in these cells.

## DISCUSSION

To ask the kinds of questions we wanted in this and previous studies (8, 9), a spacer was placed between the C-termini of the receptors and the Rluc or GFP<sup>2</sup> such that minimal BRET occurred in the intact receptors in the absence of ligand. A conformational change in the intracellular regions of the receptors therefore has to occur to generate a BRET signal. A BRET signal occurs when the donor and acceptor molecules are within 100 Å of each other, such as is necessary to generate transphosphorylation of the receptor-associated kinases (23). This methodology is in contrast to work from the Dufau lab (15) examining PRLRs where no



spacer was reported, resulting in constitutive BRET in intact receptors in the absence of ligand. Our results therefore in no way contradict the notion of receptor predimerization.

The nature of the conformational change resulting in closer approximation of the intracellular regions seems likely to involve rotation of one receptor in relation to the other. We cartooned this for the PRLR in a review in 2005 (24) based in large part on a pioneering study by Seubert et al. on the erythropoietin receptor (25). More recently, work from the Waters' lab on the growth hormone receptor (GHR) (17) supports this concept. In the current study, deletion of the S2 domain of all three receptors resulted in close approximation of the intracellular domains and therefore constitutive BRET for all homopairs and LF-SF heteropairs. Thus, one might suggest that removal of the S2 region allowed a conformation closer to the ligand-bound state, and hence constitutive activation.

Heteropairs between the two  $\Delta$ S2 SFs did not produce constitutive BRET, a finding in keeping with our previous publication, which found no ligand-induced BRET after this pairing using the intact receptors (8). Thus, removal of the S2 region only facilitates the correct intracellular conformational change with normal receptor pairs and does not allow abnormal pairing. These results also suggest that the S2 region serves a similar function in all three forms of the human PRLR. That function appears to be to hold the intracellular region of the dimerized receptor in a conformation that does not allow signaling until PRL binds.

When BRET was examined using the similarly sized  $\Delta$ S1 receptors or the more completely deleted  $\Delta$ S1S2 receptors, there was no significant difference from the controls. This means that the generation of a BRET signal is not the result of reduced bulk of the extracellular region of the receptor, but within the parameters tested in the current study is specific to the changes induced by removal of the S2 region. Since the entire membrane proximal region of S2 was removed, we can also conclude that adoption of an active signaling conformation of the intracellular domain does not require this part, but rather that some part of this subdomain of the intact receptor inhibits the adoption of the active signaling conformation by the intracellular domain, an inhibition that is relieved by the binding of PRL. This result is consistent with previous work by Gourdou et al. using the LF of the rabbit receptor (12). Given that bulk of the extracellular region was not the significant parameter, we can conclude that it is conformation of the ECD that is important and, furthermore, that this constitutes evidence that a change in conformation of the ECD can result in a change in conformation of the intracellular signaling regions of the complex. In the T47D cells, there appeared to be a trend toward decreased cell number with the  $\Delta$ S1 receptors. This was not reproduced in the DU145 cells. Since this effect was not statistically significant, it may only reflect a chance result. Alternatively, it may be an effect seen only in cells that normally express high levels of intact receptors. Analysis of this possibility will require further experimentation with adenoviral vectors to increase transfection efficiency.

Because there are many unknowns about signal generation from the short receptors, we chose to monitor known end results of signaling, rather than activation of signaling molecules, to link the generation of a BRET signal to a

biologically relevant effect such as cell proliferation and activation of  $\beta$ -casein gene expression.

Of the  $\Delta$ S2 constitutively active forms, only  $\Delta$ S2LF increased cell number over that seen with intact receptors in the absence of ligand. Use of the intact receptors was an important control because of the possibility that overexpression by itself could activate signaling. The magnitude of the increase was not large, primarily because these were transient transfection assays with about 30% transfection efficiency. The data presented were not normalized for transfection efficiency, but had they been they would have shown more than a doubling in the actual transfected cells. The same result was obtained with both T47D cells and DU145 cells which inherently express very different levels of PRLRs. From the current results, therefore, it is clear that signaling through the LF increases cell number. This function for the LF is in agreement with the results of Lee et al. (13) and work showing activation of cyclin D1 by the LF (26). Analysis of  $\beta$ -casein expression showed that constitutive activation of both the LF and SF1a increased expression, a result consistent with many previous studies for the LF and with a previous study from this laboratory in collaboration with the Vonderhaar group on the SF1a (8). Once again, the data presented were not normalized for transfection efficiency, and hence the effect per transfected cell is greater than illustrated. It is also interesting to note that the effect of  $\Delta$ S2SF1a is very similar to that of LF, despite the fact that  $\Delta$ S2SF1a is expressed at a lower overall level in the cells. This may reflect a greater efficiency of SF1a receptors or may reflect an equal appropriate localization in the cell. Certainly, with the intact receptors, there was very similar cell-associated PRL-Gluc despite very different overall levels of expression. As described previously (8), there is no suggestion that activation of  $\beta$ -casein does not require Stat 5 since these cells have a high background Stat 5 activation to which activation of other signaling cascades can add.

On the basis of these findings, one might suggest that PRL promotes proliferation and differentiation in cells expressing mostly LF and has a greater differentiative effect in cells with a significant expression of SF1a. Thus, the deduced role for prolactin in cancer cell lines may be cell line dependent. The current experiments shed no light on the role of the SF1b receptor since constitutive activity of this receptor did not significantly alter either basal cell proliferation or  $\beta$ -casein expression during the duration of these transient transfection experiments.

In presenting the data, we have chosen not to normalize to either transfection efficiency or the level of expression, although we have reported their similarities or differences throughout. We opted not to normalize to transfection efficiency since this was not reflective of expression, but only the percentage of cells transfected. To additionally normalize to expression gave us two concerns. The first was that the data would then be triply normalized, and the second was whether this was appropriate since although total expression of, for example, LF and SF1a was rather different, the amount of cell-associated PRL-Gluc with both intact receptors was the same. This suggests that the total number of intact receptors on the plasma membrane was the same and that this might be the meaningful parameter to which to normalize. That said, however, it is unclear whether the  $\Delta$ S2 receptors need a plasma membrane localization since they

do not require ligand and, at least in other members of this cytokine family (27), Janus kinase 2 can associate with the receptor in the rough endoplasmic reticulum. With these unknowns, it seemed more appropriate to present the data in a more raw form and discuss the possible role of differential expression as we have.

The tertiary structure of the extracellular domain of the rat receptor, as determined by crystallization with placental lactogen, shows that the S1 and S2 regions form six ligand-binding loops (L1–L6). Of these, L1, L2, and L3 are located in S1, and L5 and L6 are located in S2, while L4 is in the linker region between the domains (28). Since the  $\Delta$ S1 and  $\Delta$ S2 receptors retained some of the loops, it was not unreasonable to ask whether there was any residual ligand binding for these forms. Ligand binding was assessed using a new fusion protein developed in this laboratory in which the C-terminus of PRL is linked to *Gaussia* luciferase via a 14 amino acid linker. With this size linker and expression in eukaryotic cells, both the luciferase and PRL are biologically active. The luciferase makes the assay very sensitive, allowing us to look at binding under more physiological circumstances. Using an amount of the PRL-Gluc equivalent to 50 ng/mL unmodified PRL, we were able to show similar levels of cell-associated luciferase activity for each of the intact receptors. Removal of S1 or S2 reduced cell-associated luciferase activity to about 25% of that with the intact receptors, a result that was clearly statistically significant. Not significant, however, was the difference between residual luciferase activity and the subtracted nonspecific activity (activity after binding in the presence of a 50-fold excess of unmodified PRL). HEK293 cells do not produce PRL, and hence the constitutive BRET seen with the  $\Delta$ S2 receptors cannot be the result of PRL binding to the remaining portion of the receptor. When PRL was added to the system, there was also no change in the amount of BRET. DU145 and T47D cells, on the other hand, produce autocrine PRL (29, 30) and so the potential existed for this autocrine PRL to affect proliferation or  $\beta$ -casein expression through some residual binding. However, when antibody was added to the medium during these analyses, there was no change in the overall result, although cell number in each incubation was decreased, thereby demonstrating that the antibody bound and neutralized the autocrine PRL. Thus, even though others have reported residual binding for a LF devoid of most of the S1 region (31), our results show that this is insufficient to produce BRET or effects on cell proliferation or endogenous  $\beta$ -casein expression. However, in this cited article the very N terminal S1 residues were removed, whereas in our case, amino acids 1–3 and 103–106 remained in our  $\Delta$ S1 constructs. Perhaps these amino acids before the S2 region decreased access for binding. Our  $\Delta$ S1 and  $\Delta$ S2 constructs were very similar to those of Gourdou et al. (12) who found no residual binding for either. For the purposes of the current study, the most important issue, substantiated by the lack of effect of (1) intact receptors in the absence of added ligand and presence of anti-PRL, (2) added PRL on the BRET analysis, and (3) anti-PRL on the overall proliferation and  $\beta$ -casein result, was constitutive activity of the  $\Delta$ S2 receptors.

Given the potential clinical importance of constitutively active receptors, we also asked whether there was any evidence for naturally occurring constitutively active  $\Delta$ S2 receptors in human cells. Analysis by RT-PCR showed the

expression (at least at the level of mRNA) of  $\Delta$ S2 forms in three prostate cancer cell lines and human microvascular endothelial cells. The high level of expression of other PRLR forms in T47D cells made definitive PCR demonstration of  $\Delta$ S2 forms difficult, and therefore these data are not shown. More detailed analysis in the prostate cancer cells showed that the  $\Delta$ S2 version of all three receptor isoforms could be detected. Not only were these seen as PCR amplicons, but also the bands were sequenced to confirm their identity. In addition, Western analysis of PC3 LNCaP and T47D cells showed an anti-PRLR positive band equivalent in size to transfected  $\Delta$ S2SF1b. When the natural  $\Delta$ S2 versions of all three receptors were sequenced, they serendipitously were found to have exactly the same sequence as those we had constructed. It therefore appears that human cells have the capability of splicing the receptor to produce a constitutively active form. Of importance is the number of cell types shown to express the  $\Delta$ S2 forms of the receptor (LNCaP, PC3, DU145, T47D, and HmVEC) since this makes the forms less likely to be an oddity of a single transformed cell line. The splice site is not a common one but has similarities to other reported sites (32). This raises the possibility that the  $\Delta$ S2 varieties play roles in the regulation of cell proliferation and differentiation.

We conclude that a change in the conformation of the extracellular domain can indeed cause a change in the conformation of the intracellular signaling region, thereby supporting the as yet unproven concept that ligand binding to the ECD of predimerized receptors could have a similar effect. Using the constitutively active receptors, we also directly compared the functions of the LF and both SFs in the regulation of cell proliferation and  $\beta$ -casein expression and found that constitutive activation of the LF results in increased cell number, whereas constitutive activation of either the LF or SF1a results in increased  $\beta$ -casein gene expression. In addition, we showed that human cells express  $\Delta$ S2 versions of the receptors, in some cells at levels greater than the intact versions at the mRNA level, suggesting a possible role in the regulation of proliferation and differentiation.

## ACKNOWLEDGMENT

We are grateful to Dr. Barbara K. Vonderhaar for providing the original receptor constructs and to Dr. David Johnson for allowing us continued access to the spectrofluorimeter.

## REFERENCES

1. Nevalainen, M. T., Valve, E. M., Ingleton, P. M., Nurmi, M., Martikainen, P. M., and Harkonen, P. L. (1997) Prolactin and prolactin receptors are expressed and functioning in human prostate. *J. Clin. Invest.* 99, 618–627.
2. Neville, M. C., McFadden, T. B., and Forsyth, I. (2002) Hormonal regulation of mammary differentiation and milk secretion. *J. Mammary Gland Biol. Neoplasia* 7, 49–66.
3. Goffin, V., Binart, N., Touraine, P., and Kelly, A. P. (2002) Prolactin: the new biology of an old hormone. *Annu. Rev. Physiol.* 64, 47–67.
4. Hu, Z., Zhuang, L., Maria, L., and Dufau, M. L. (1996) Multiple and tissue-specific promoter control of gonadal and non-gonadal prolactin receptor gene expression. *J. Biol. Chem.* 271, 10242–10246.
5. Nagano, M., and Kelly, P. A. (1994) Tissue distribution and regulation of rat prolactin receptor gene expression. Quantitative analysis by polymerase chain reaction. *J. Biol. Chem.* 269, 13337–13345.

6. Cosman, D. (1993) The hematopoietin receptor superfamily. *Cytokine* 5, 95–106.
7. Bole-Feyssot, C., Goffin, V., Edery, M., Binart, N., and Kelly, P. A. (1998) Prolactin (PRL) and its receptor: actions, signal transduction pathways and phenotypes observed in PRL receptor knockout mice. *Endocr. Rev.* 19, 225–268.
8. Tan, D., Johnson, D. A., Wu, W., Zeng, L., Chen, Y. H., Chen, W. Y., Vonderhaar, B. K., and Walker, A. M. (2005) Unmodified prolactin (PRL) and S179D PRL-initiated bioluminescence resonance energy transfer between homo- and hetero-pairs of long and short human PRL receptors in living human cells. *Mol. Endocrinol.* 19, 1291–1303.
9. Langenheim, J. F., Tan, D., Walker, A. M., and Chen, W. Y. (2005) Two wrongs can make a right: dimers of prolactin and growth hormone receptor antagonists behave as agonists. *Mol. Endocrinol.* 19, 1291–1303.
10. Goffin, V., and Kelly, P. A. (1997) The prolactin/growth hormone receptor family: structure/ function relationships. *J. Mammary Gland Biol. Neoplasia* 2, 7–17.
11. Christinger, H. W., Elkins, P. A., Sandowski, Y., Sakal, E., Gertler, A., Kossiakoff, A. A., and de Vos, A. M. (1998) Crystallization of ovine placental lactogen in a 1:2 complex with the extracellular domain of the rat prolactin receptor. *Acta Crystallogr., Sect. D: Biol. Crystallogr.* 54, 1408–1411.
12. Gourdou, I., Gabou, L., Paly, J. A., Kermabon, A. Y., Belair, L., and Djiane, J. (1996) Development of a constitutively active mutant form of the prolactin receptor, a member of the cytokine receptor family. *Mol. Endocrinol.* 10, 45–56.
13. Lee, R. C., Walters, J. A., Reyland, M. E., and Anderson, S. M. (1999) Constitutive activation of the prolactin receptor results in the induction of growth factor-independent proliferation and constitutive activation of signaling molecules. *J. Biol. Chem.* 274, 10024–10034.
14. Sakal, E., Elberg, G., and Gertler, A. (1997) Direct evidence that lactogenic hormones induce homodimerization of membrane-anchored prolactin receptor in intact Nb2–11C rat lymphoma cells. *FEBS Lett.* 410, 289–292.
15. Qazi, A. M., Tsai-Morris, C. H., and Dufau, M. L. (2006) Ligand-independent homo- and heterodimerization of human prolactin receptor variants: inhibitory action of the short forms by heterodimerization. *Mol. Endocrinol.* 20, 1912–1923.
16. Gadd, S. L., and Clevenger, C. V. (2006) Ligand-independent dimerization of the human prolactin receptor isoforms: functional implications. *Mol. Endocrinol.* 20, 2734–2746.
17. Brown, R. J., Adams, J. J., Pelekanos, R. A., Wan, Y., McKinstry, W. J., Palethorpe, K., Seeber, R. M., Monks, T. A., Eidne, K. A., Parker, M. W., and Waters, M. J. (2005) Model for growth hormone receptor activation based on subunit rotation within a receptor dimer. *Nat. Struct. Mol. Biol.* 12, 814–821.
18. Constantinescu, S. N., Keren, T., Socolovsky, M., Nam, H., Henis, Y. I., and Lodish, H. F. (2001) Ligand-independent oligomerization of cell-surface erythropoietin receptor is mediated by the transmembrane domain. *Proc. Natl. Acad. Sci. U.S.A.* 98, 4379–4384.
19. Chen, T. J., Kuo, C. B., Tsai, K. F., Liu, J. W., Chen, D. Y., and Walker, A. M. (1998) Development of recombinant human prolactin receptor antagonists by molecular mimicry of the phosphorylated hormone. *Endocrinology* 139, 609–616.
20. Huang, K. T., Chen, Y. H., and Walker, A. M. (2004) Inaccuracies in MTS assays: major distorting effects of medium, serum albumin, and fatty acids. *BioTechniques* 37, 406–412.
21. Wu, W., Ginsburg, E., Vonderhaar, B. K., and Walker, A. M. (2005) S179D prolactin increases vitamin D receptor and p21 through upregulation of short 1b prolactin receptor in human prostate cancer cells. *Cancer Res.* 65, 7509–7515.
22. Rozakis-Adcock, M., and Kelly, P. A. (1992) Identification of ligand binding determinants of the prolactin receptor. *J. Biol. Chem.* 267, 7428–7433.
23. Watson, C. J., and Burdon, T. G. (1996) Prolactin signal transduction mechanisms in the mammary gland: the role of the Jak/Stat pathway. *Rev. Reprod.* 1, 1–5.
24. Walker, A. M. (2005) Prolactin receptor antagonists. *Curr. Opin. Invest. Drugs* 6, 378–385.
25. Seubert, N., Royer, Y., Staerk, J., Kubatzky, K. F., Moucadel, V., Krishnakumar, S., Smith, S. O., and Constantinescu, S. N. (2003) Active and inactive orientations of the transmembrane and cytosolic domains of the erythropoietin receptor dimer. *Mol. Cell* 12, 1239–1250.
26. Brockman, J. L., and Schuler, L. A. (2005) Prolactin signals via Stat5 and Oct-1 to the proximal cyclin D1 promoter. *Mol. Cell. Endocrinol.* 239, 45–53.
27. Huang, L. J., Constantinescu, S. N., and Lodish, H. E. (2001) The N-terminal domain of Janus kinase 2 is required for Golgi processing and cell surface expression of erythropoietin receptor. *Mol. Cell* 8, 1327–1338.
28. Elkins, P. A., Christinger, H. W., Sandowski, Y., Sakal, E., Gertler, A., de Vos, A. M., and Kossiakoff, A. A. (2000) Ternary complex between placental lactogen and the extracellular domain of the prolactin receptor. *Nat. Struct. Biol.* 7, 808–815.
29. Xu, X., Kreye, E., Kuo, C. B., and Walker, A. M. (2001) A molecular mimic of phosphorylated prolactin markedly reduced tumor incidence and size when DU145 human prostate cancer cells were grown in nude mice. *Cancer Res.* 61, 6098–6114.
30. Ginsburg, E., and Vonderhaar, B. K. (1995) Prolactin synthesis and secretion by human breast cancer cells. *Cancer Res.* 55, 2591–2595.
31. Kline, J. B., Ryczyn, M. A., and Clevenger, C. V. (2002) Characterization of a novel and functional human prolactin receptor isoform (delta S1PRLr) containing only one extracellular fibronectin-like domain. *Mol. Endocrinol.* 16, 2310–2322.
32. Jackson, I. J. (1991) A reappraisal of non-consensus mRNA splice sites. *Nucleic Acids Res.* 19, 3795–3798.

BI7013882